



This two-level enclosed regional shopping centre sits at the corner of Topsail Road and Columbus Drive.



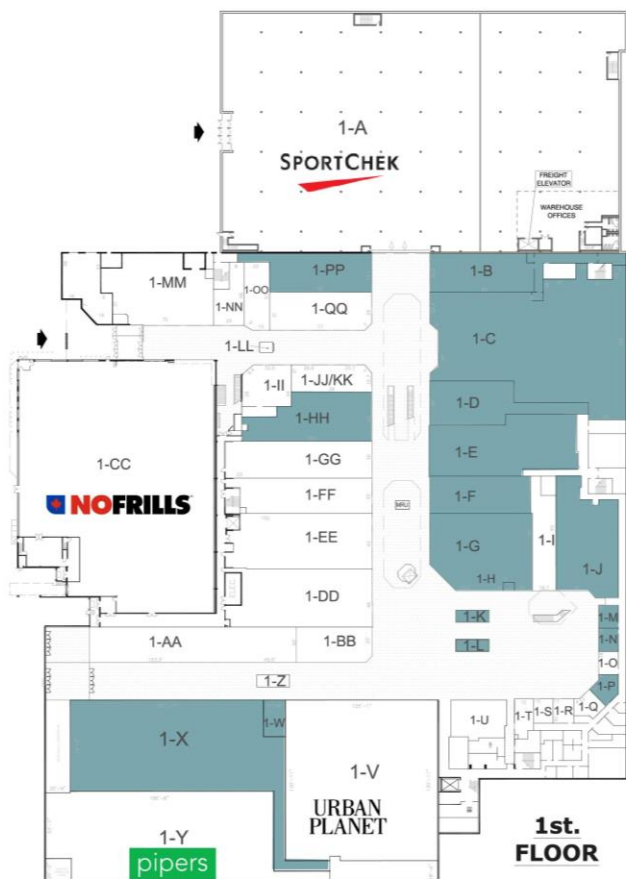
GLA approx. 427,500 sq.ft



53
Stores / Services



10,556
vehicles per day



THE VILLAGE SHOPPING CENTRE
ST. JOHN'S, NL

- FIRST FLOOR -

Tenant	sq.ft.
1-A. Sport Chek	2,514
1-B. Available / Disponible	2,514
1-C. Available / Disponible	14,735
1-D. Available / Disponible	2,500
1-E. Available / Disponible	3,898
1-F. Available / Disponible	3,838
1-G. Available / Disponible	4,684
1-H. TD Green Machine	
1-I. Maritime Travel	
1-J. Available / Disponible	4,096
1-K. Available / Disponible	Kiosk
1-L. Available / Disponible	Kiosk
1-M. Available / Disponible	299
1-N. Available / Disponible	295
1-O. Smachno UA Bakery	
1-P. Available / Disponible	457
1-Q. Kuma Bento	
1-R. Silver Bowl	
1-S. Hot Shoppe	
1-T. Mama Africa	
1-U. Tim Hortons	
1-V. Urban Planet	
1-W. Available / Disponible	600
1-X. Available / Disponible	14,179
1-Y. Pipers	
1-Z. Adorn Brow Bar	
1-AA. Village Dental	
1-BB. Telus Mobility	
1-CC. No Frills	
1-DD. Fairweather	
1-EE. Suzy Shier	
1-FF. Bluemotes	
1-GG. Jelly Bean Entertainment	
1-HH. Available / Disponible	3,398
1-IJ/KK. Charm Diamond Centre	
1-L. ALC Lottery	
1-MM. Academy Canada	
1-NN. Nanoshop Sales and Repair	
1-OO. 1949 Barbershop	
1-PP. Available / Disponible	2,542
1-QQ. Northern Reflections	

Outside Pad

Pad A. Bank of Montreal
Pad B. Wendy's
Pad C. Thee Hollow Noggins
Pad D. George Richards

The Village Shopping Centre
430 Topsail Road
St. John's, NL

plazaTM
REIT

www.plaza.ca

Fredericton (506) 451-1826
Halifax (902) 468-8688

Montreal (514) 457-7007
Toronto (416) 361-5892

2023-10-06 Rev. 005



THE VILLAGE SHOPPING CENTRE
ST. JOHN'S, NL

- SECOND FLOOR -

Tenant	sq.ft.
2-A. Home Hardware	
2-B. Rossy	
2-C. Available / Disponible	1,965
2-D. Available / Disponible	1,218
2-E. Bell	
2-F. Kutting Zone	
2-G. Available / Disponible	2,020
2-H. Available / Disponible	Kiosk
2-I. Vogue Optical	
2-J. Senterex	
2-K. Drs. Coffey & Coffey Dermatologists	
2-L. Available / Disponible	2,668
2-M. Eclipse	
2-N. Palms Beauty Store	
2-O. Available / Disponible	1,418
2-P. Available / Disponible	1,596
2-Q. Available / Disponible	1,125
2-R. LEASED	
2-S. Available / Disponible	1,821
2-T. Coles	
2-U. Big Brothers and Big Sisters of Newfoundland	
2-V. Weight Watchers	
2-W. Salvation Army	
2-X. Westside Charles	
2-Y. Dollarama	
2-Z. Available / Disponible	18,895
2-AA. Available / Disponible	1,043
2-BB. Available / Disponible	1,904
2-CC. Cleo	
2-DD. Available / Disponible	1,630
2-EE. Available / Disponible	1,188
2-FF. Kathy's Nail & Spa	
2-GG. International Grenfell Association (office space)	
2-HH. Available / Disponible	1,050
2-IL. Available / Disponible	1,206
2-JJ. Fit 4 Less	
2-KK. Island Skincare	
2-LL. Available / Disponible	2,378
2-MM. Laura	
2-NN. Available / Disponible	2,723
2-OO. NL Health	

The Village Shopping Centre
430 Topsail Road
St. John's, NL

plazaTM
REIT

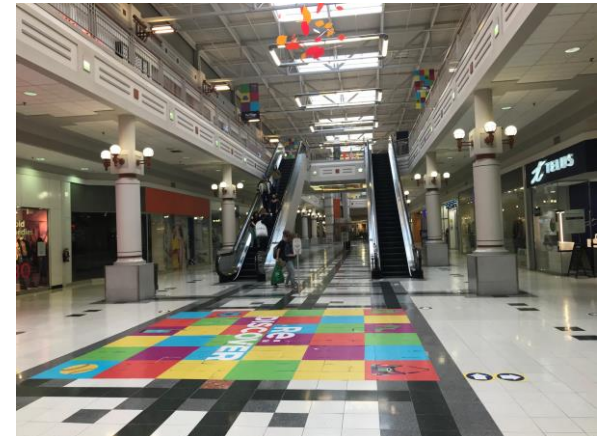
www.plaza.ca





Fredericton (506) 451-1826
Halifax (902) 468-8688

Montreal (514) 457-7007
Toronto (416) 361-5892

2023-11-07 Rev. 004

Property Photos



	0-5 minute drive	0-10 minute drive	0-15 minute drive
 Total Population	25,718	95,076	147,858
 Daytime population	12,462	105,019	128,791
 Average Household Income	\$96,717	\$102,146	\$111,396
 Median Age	45.1	42.7	42.1

*Data Source: Statistics Canada - 2021 census information.

