



This two-level enclosed regional shopping centre sits at the corner of
Topsail Road and Columbus Drive.



GLA
approx. 427,500 sq.ft



54
Stores / Services

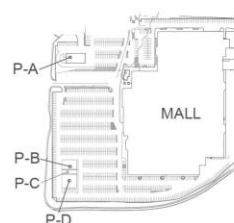


10,556
vehicles per day

THE VILLAGE SHOPPING CENTRE ST. JOHN'S, NL

- FIRST FLOOR -

Tenant	sq.ft.
1-A. Sport Chek	
1-B. Available / Disponible	2,514
1-C. Available / Disponible	14,735
1-D. Lease Pending	
1-E. Available / Disponible	3,898
1-F. Available / Disponible	3,838
1-G. Available / Disponible	4,684
1-H. TD Green Machine	
1-I. Maritime Travel	
1-J. Available / Disponible	4,096
1-K. Available / Disponible	Kiosk
1-L. Available / Disponible	Kiosk
1-M. Available / Disponible	299
1-N. Available / Disponible	295
1-O. Smachno UA Bakery	
1-P. Tissera's Sri Lankan Cuisine	
1-Q. Kuma Bento	
1-R. Silver Bowl	
1-S. Hot Shoppe	
1-T. Mama Africa	
1-U. Tim Hortons	
1-V. Urban Planet	
1-W. Available / Disponible	600
1-X. Available / Disponible	14,179
1-Y. Pipers	
1-Z. Adornn Brow Bar	
1-AA. Village Dental	
1-BB. Telus Mobility	
1-CC. No Frills	
1-DD. Fairweather	
1-EE. Suzy Shier	
1-FF. Bluenotes	
1-GG. Jelly Bean Entertainment	
1-HH. Available / Disponible	3,398
1-IL. Showcase	
1-JJ/KK. Charm Diamond Centre	
1-LL. ALC Lottery	
1-MM. Academy Canada	
1-NN. Nanoshop Sales and Repair	
1-OO. 1949 Barbershop	
1-PP. Available / Disponible	2,542
1-QQ. Northern Reflections	
Outside Pad	
Pad A. Bank of Montreal	
Pad B. Wendy's	
Pad C. Thee Hollow Noggins	
Pad D. George Richards	



The Village Shopping Centre

430 Topsail Road
St. John's, NL

plazaTM
REIT

www.plaza.ca

Fredericton (506) 451-1826
Halifax (902) 468-8688
Montreal (514) 457-7007
Toronto (416) 361-5892

2023-10-06 Rev. 005

1st.
FLOOR

THE VILLAGE SHOPPING CENTRE ST. JOHN'S, NL

- SECOND FLOOR -

Tenant	sq.ft.
2-A. Home Hardware	
2-B. Rossy	
2-C. Available / Disponible	1,965
2-D. Available / Disponible	1,218
2-E. Bell	
2-F. Kutting Zone	
2-G. Mother Goose NL	
2-H. Available / Disponible	Kiosk
2-I. Vogue Optical	
2-J. Sentrex	
2-K. Drs. Coffey & Coffey Dermatologists	
2-L. Available / Disponible	2,668
2-M. Eclipse	
2-N. Available / Disponible	1,380
2-O. Available / Disponible	1,418
2-P. Available / Disponible	1,596
2-Q. Available / Disponible	1,125
2-R. Available / Disponible	755
2-S. Available / Disponible	1,821
2-T. Cotes	
2-U. Big Brothers and Big Sisters of Newfoundland	
2-V. Weight Watchers	
2-W. Salvation Army	
2-X. Westside Charlies	
2-Y. Dollarama	
2-Z. Available / Disponible	18,895
2-AA. Available / Disponible	1,043
2-BB. Available / Disponible	1,904
2-CC. Cleo	
2-DD. Available / Disponible	1,630
2-EE. Available / Disponible	1,188
2-FF. Kathy's Nail & Spa	
2-GG. International Grenfell Association (office space)	
2-HH. Available / Disponible	1,050
2-II. Available / Disponible	1,206
2-JJ. Fit 4 Less	
2-KK. Island Skincare	
2-LL. Available / Disponible	2,378
2-MM. Laura	
2-NN. Available / Disponible	2,723
2-OO NL Health	



2nd.
FLOOR

The Village Shopping Centre

430 Topsail Road
St. John's, NL

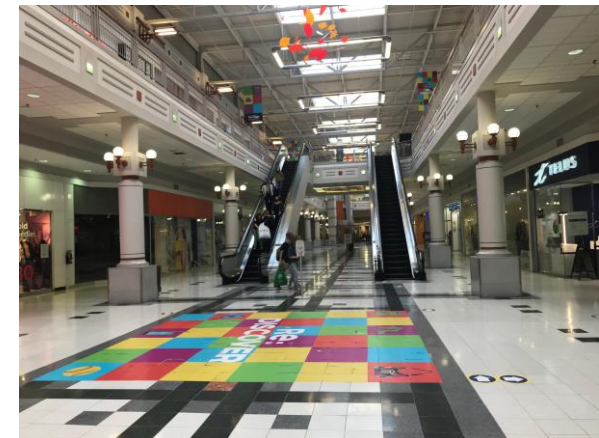
plazaTM
REIT





www.plaza.ca

Fredericton (506) 451-1826
Halifax (902) 468-8688
Montreal (514) 457-7007
Toronto (416) 361-5892

2022-11-07 Rev. 004

Property Photos



	0-5 minute drive	0-10 minute drive	0-15 minute drive
 Total Population	25,718	95,076	147,858
 Daytime population	12,462	105,019	128,791
 Average Household Income	\$96,717	\$102,146	\$111,396
 Median Age	45.1	42.7	42.1

*Data Source: Statistics Canada - 2021 census information.

