


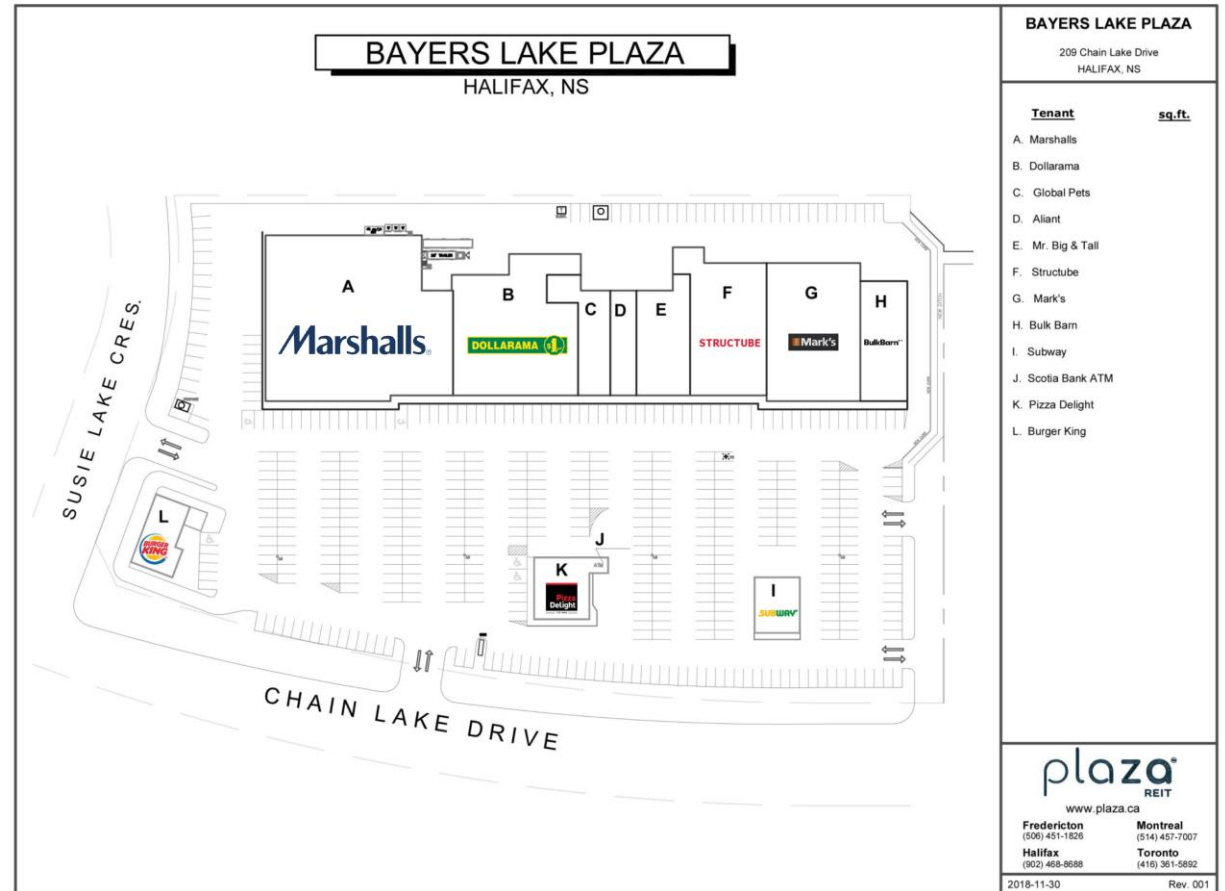
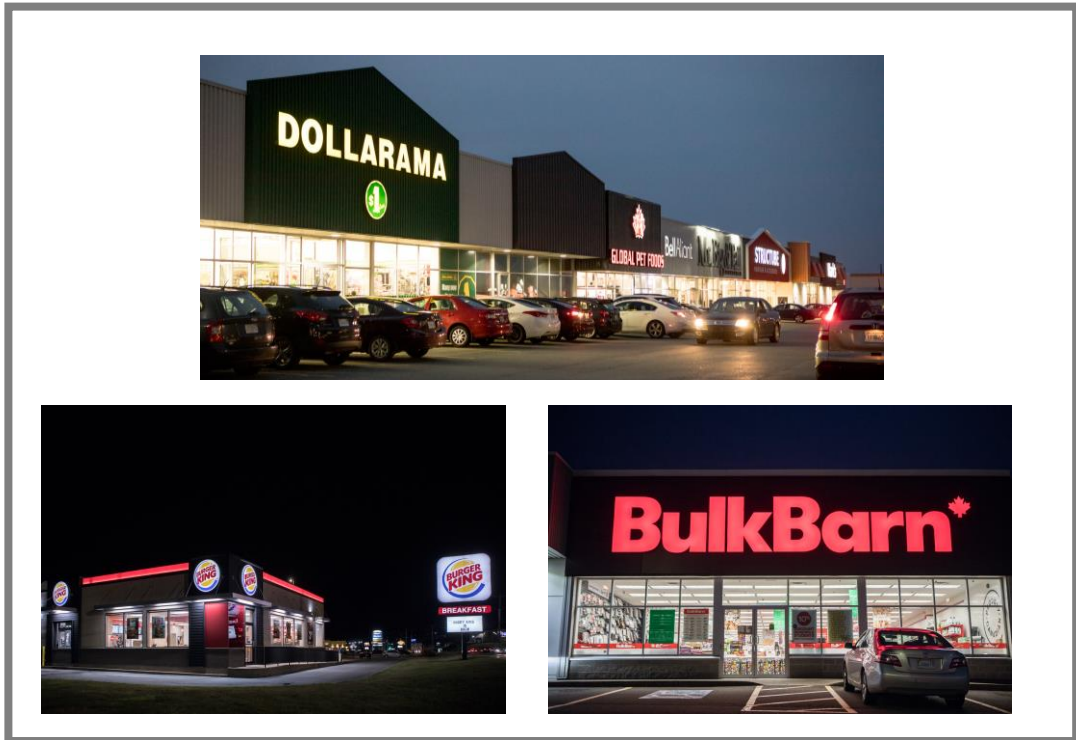








This property is located in the heart of busy Bayers Lake Power Centre on Chain Lake Drive.

 GLA approx. 89,000 sq.ft.
  12 Stores / Services
  13,179 vehicles per day



	0-5 minute drive	0-10 minute drive	0-15 minute drive
 Total Population	20,275	129,880	235,231
 Daytime population	6,649	52,834	168,255
 Average Household Income	\$72,874	\$88,788	\$86,745
 Median Age	41.7	40.1	39.9

*Data Source: Statistics Canada - 2021 census information.

