

# KENMOUNT ROAD PLAZA

## ST. JOHN'S, NFLD

**Address** 80 Kenmount Road, St. John's, NL A1B 3R1

**Area** 21,213 sq. ft.

**Parking Spaces** 184

**Retailers** Montana's, Cora

**Property Summary** The property is strategically located on Kenmount Road in proximity to the Avalon Mall (St. John's most important regional enclosed Mall) and the new Kenmount Power Centre. The property's corner location and traffic light provide easy access and egress from the very busy Kenmount Road commercial artery.



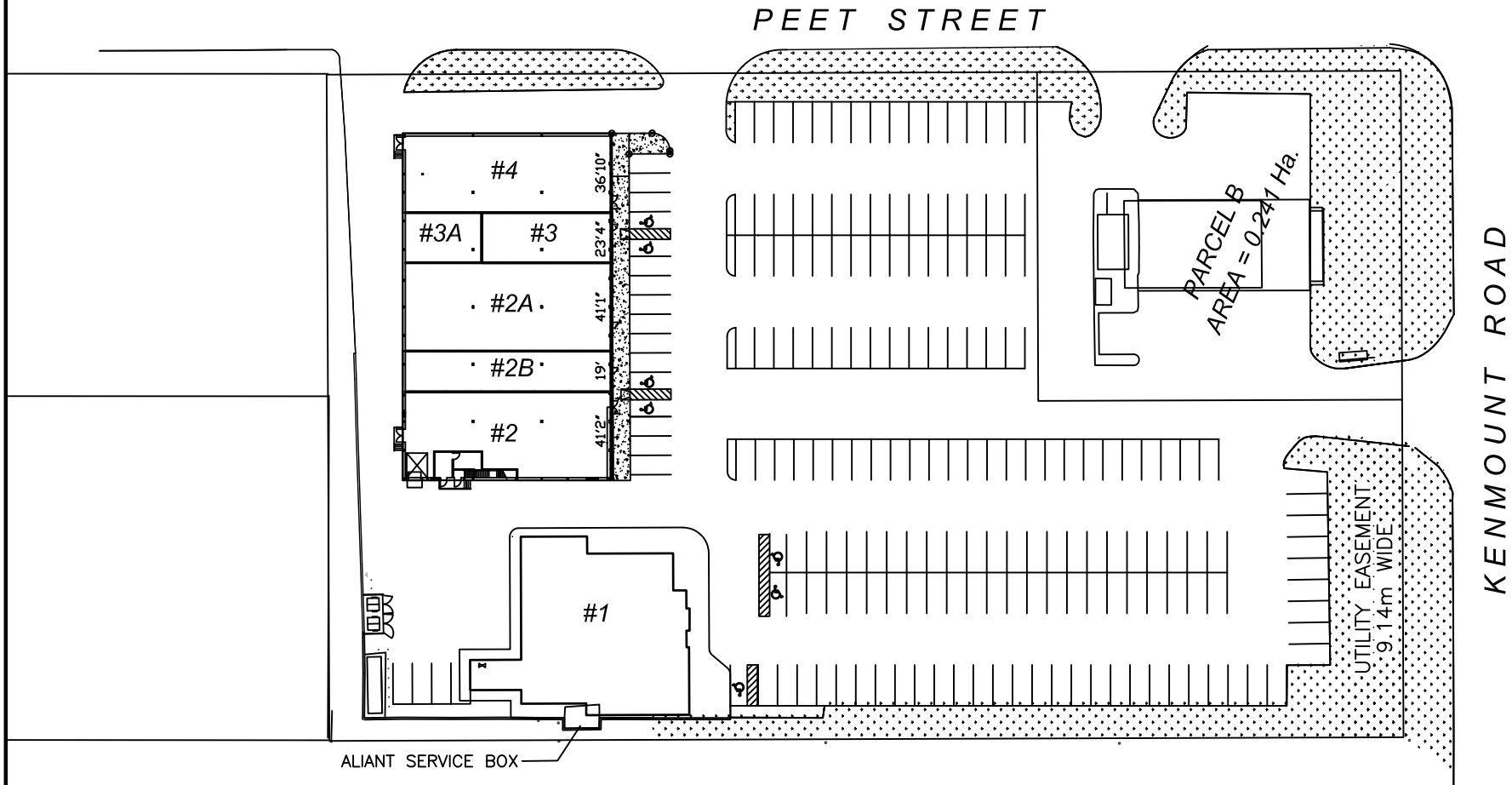
**Address:**  
998 Parkland Drive, Suite 201  
Halifax, NS  
B3M 0A6



**Contact:**  
Jim Pushie  
902-468-8688  
jim.pushie@plaza.ca

# KENMOUNT ROAD PLAZA

ST. JOHN'S, NL.



Tenant	sq.ft.
1. Montana's	5,814
2. <b>Available</b>	<b>3,627</b>
2A. Easyhome	4,001
2B. Pannizza	1,849
3. Easy Financial	1,414
3A. <b>Available</b>	<b>~927</b>
4. Cora's	3,584

## KENMOUNT ROAD PLAZA

80 Kenmount Road  
St. John's, NL.



www.plaza.ca

Fredericton  
(506) 451-1826  
Montreal  
(514) 457-7007  
Halifax  
(902) 468-8688  
Toronto  
(416) 361-5892