

# 190 QUEEN STREET EAST BRAMPTON, ONTARIO

**Area :** Building: 2,036 with drive-thru)  
Site: 18,900 sq.ft.

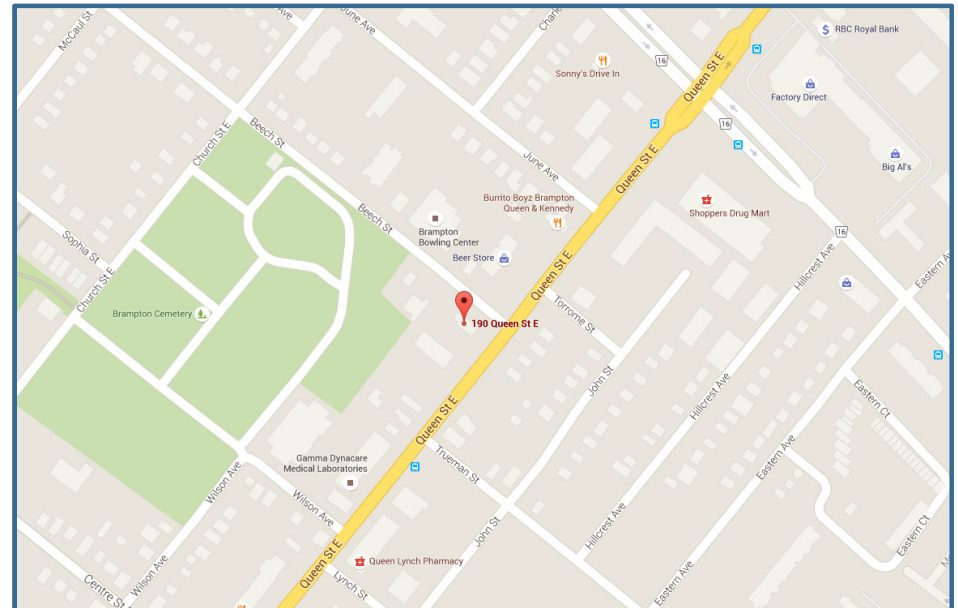
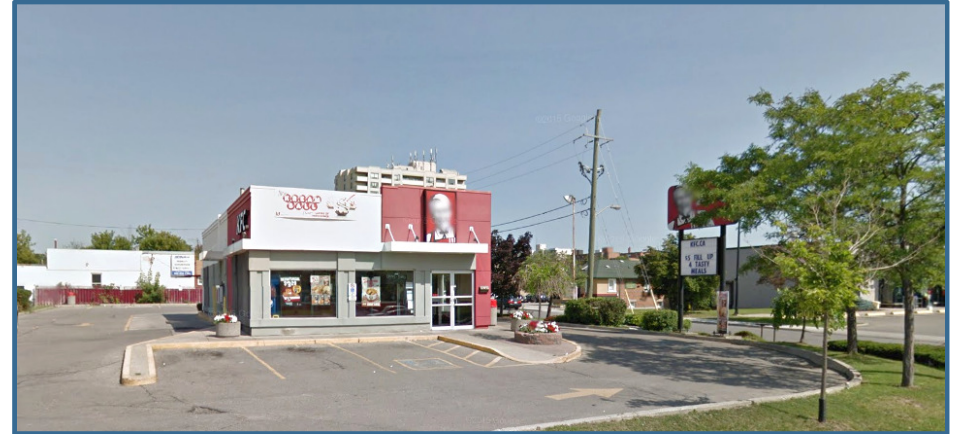
**Location:** Corner Beech Street  
West of Kennedy

**Access:** - Queen Street East  
- Beech Street

**In proximity to:** - The Beer Store  
- Office/Apartment Complex  
- Medical Clinics  
- Howard Johnson's Hotel  
- Pharmaprix

**Population of  
Brampton** 523,911 (2011)

**Average Daily Traffic:** 50,000 +



Susan Henderson  
514-457-7007 Ext 246  
susan.henderson@plaza.ca



90 Morgan Road, Suite 200  
Baie D'Urfé, Québec H9X 3A8  
www.plaza.ca

Tracy J. Fraser  
514-457-7007 Ext 227  
tracy.j.fraser@plaza.ca

# 190 QUEEN STREET EAST BRAMPTON, ONTARIO



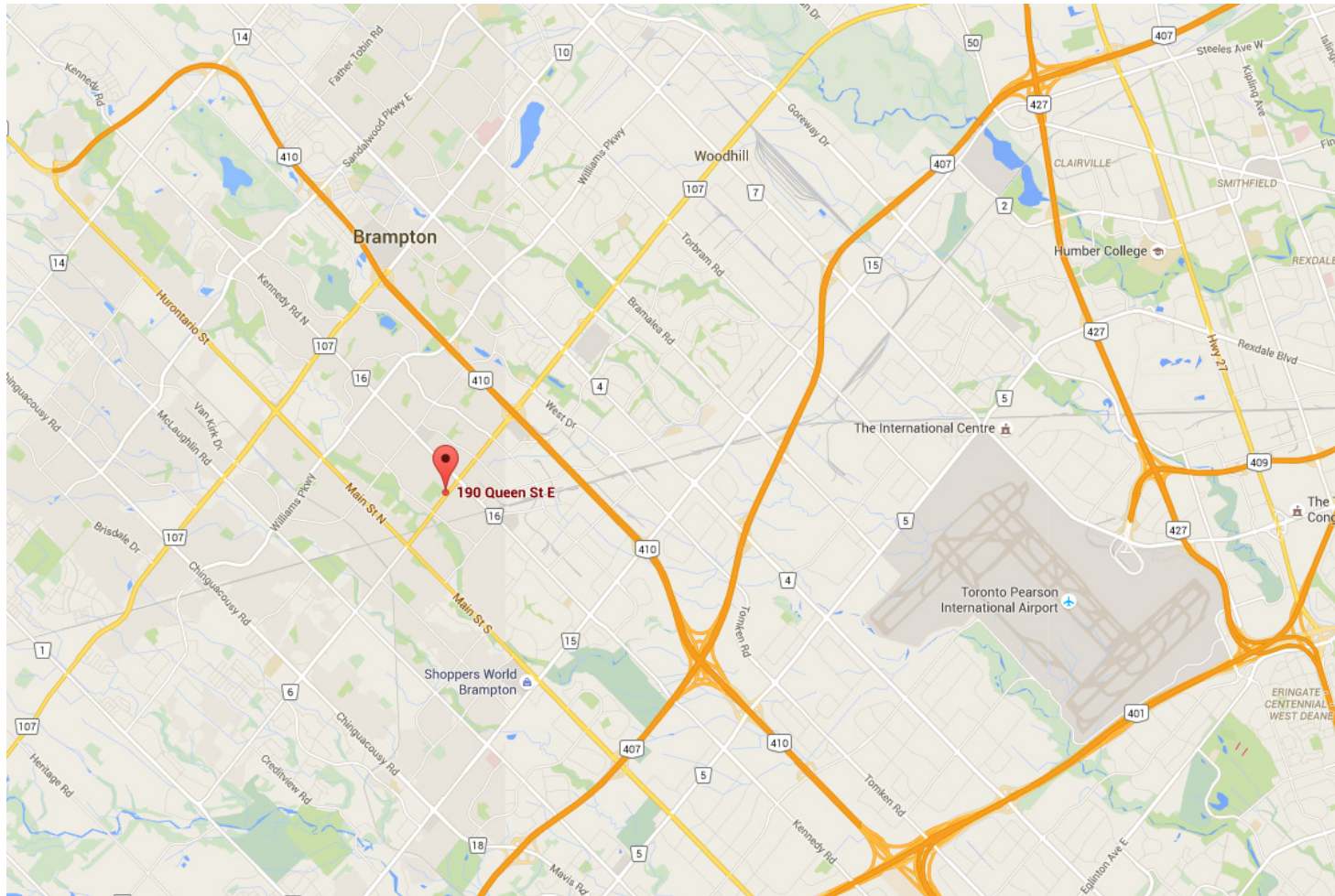
Susan Henderson  
514-457-7007 Ext 246  
susan.henderson@plaza.ca

  
PLAZA REALTY  
90 Morgan Road, Suite 200  
Baie D'Urfé, Québec H9X 3A8  
www.plaza.ca

Tracy J. Fraser  
514-457-7007 Ext 227  
tracy.j.fraser@plaza.ca



# 190 QUEEN STREET EAST BRAMPTON, ONTARIO



Susan Henderson  
514-457-7007 Ext 246  
susan.henderson@plaza.ca

  
PLAZA  
PLAZA RETAIL REIT  
90 Morgan Road, Suite 200  
Baie D'Urfé, Québec H9X 3A8  
www.plaza.ca

Tracy J. Fraser  
514-457-7007 Ext 227  
tracy.j.fraser@plaza.ca